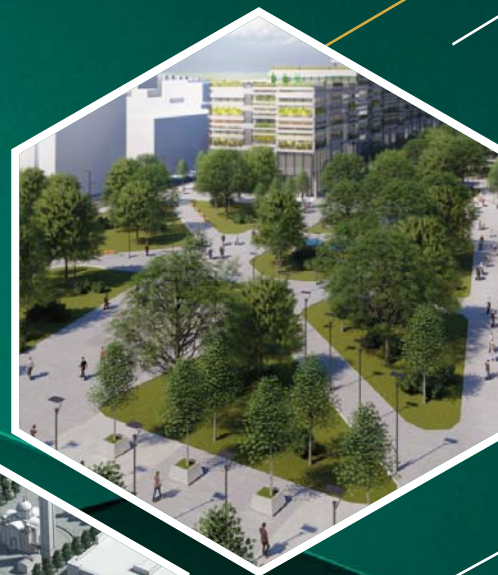


INTERNATIONAL
OPEN PUBLIC
COMPETITION
FOR THE CONCEPTUAL
DESIGN FOR THE

CENTRAL PEDESTRIAN ZONE

IN BANJA LUKA



Banja Luka,
23. december 2019.
- 13. januar 2020.
Banski dvor

Igor Radojčić,
MSc in El. Eng. chair

Prof. Ivan Rašković,
Arch. deputy chair

Renato Rizzi,
architect, member

Prof. Brankica Milojević,
PhD Arch, memembr

Ognjen Šukalo,
PhD Arch.

Aleksandar Bobić,
landscape Arch. member

Nevena Predojević,
PhD Arch. member

Standin jury
members:
Milijana Okilj,
PhD Arch.

Nevena Šljivić Babić,
Arch.

Reporting experts:
Ljiljana Zvonar,
Arch.
Jasna Šakotić,
Arch.

Secretary:
Maja Smiljanić,
BLL



Author's code
73765AA

**SECOND
PRIZE**

in the amount of
EUR 8.500,00

The competition solution for the new pedestrian zone in Banja Luka represents a new axis of the city that should connect the ambients, incorporate them into the existing surroundings and hint at new directions in which the city should expand in future. The basic concept of the solution is to connect the space into one coherent whole, and to form a new city square as a focal point.

The proposed solution for the central pedestrian zone in Banja Luka more or less follows the concept of "fluid space" that is being developed by the formation of squares. The solution confirms the idea of greenery on the square or greenery framing the square. Integrativeness of the zone is achieved by physical functional and formative connection of ambient 1 and 2, functional connection at the level of the parterre of ambi-



ent 1 and 2 with ambient 3 and 4 united in one square framed by alleys, and pedestrian penetration from ambient 4 into ambient 5, which is treated as a closed block. In this way, the authors divide the zone into three segments (ambient: 1 + 2 and 3 + 4 and 5). In terms of the program, the authors treat the first segment of this chain as a complete functional square with the Museum of Contemporary Art (MSU). In a keen way, the solution abandons the existing street parking solution, linking the new ground-floor garage

with business activities and the urban motif of the "city staircase" to the present "hinterland" of the MSU building. The solution retains the tall trees in front of the MSU building through the concept of a raised event square with a wooden "floor" edged with a strip square above the new underground garage adjacent to the Krajina building. Ambient 3 and 4 are solved as one square surrounded and divided by double tree alleys to form "green rooms". The solution unnecessarily introduces long arched benches around the church



Studio
"NORMOTIC"
Authors team:
Zoran Dmitrovic,
Nenad Blagojevic,
Marija Bjelic Milutinovic,
Nikola Abramovic,
Marija Radojlovic,
and associates
Mihailo Sladoje and
Isidora Pokrajac,
Serbia

and does not retain the existing high trees of good quality at the site of the present park.

Ambient 5 is solved as a closed block with a permeable ground floor towards the perimeter and center of the block and commercial shops on the ground floor, while a residential-business program is foreseen on the higher floors. The interior of the block was resolved by an atrium procedure as passage yards. The authors treat the interior of the block as a commodified, or commercialized, open space for public use, and there-

fore "separate" it from the ambient 4 by cultural program.

With regard to the monumental heritage, the monument of Ban Milosavljevic is relocated without indication of a new location. On the other hand, the authors carefully determine the location for the new monument of the Defense War 1992-1995 in the part directly related to the Republika Srpska Presidential Palace and to the hinterland in ambient 5, and its cultural purposes.



Author's code
70842DM
**SECOND
PRIZE**
in the amount of
EUR 8.500,00

The basic concept of this work is based on the establishment of a new pedestrian zone in the city, which is affirmed by this approach as an accentuated "green axis". With the introduction of new contents, a new ground floor has been designed for pedestrians and active urban life. The solution foreshadows a new dimension of space ambient as a complement to the existing Banja Luka city matrix, and primarily the existing pedestrian zone and the city's already de-

veloped green fund.

The proposed solution of the central pedestrian zone in Banja Luka draws on some of the ideas of the development concept of Banja Luka as a "green city". The solution stands out as more or less a functional solution for the ground floor and urban environment, above all by affirming urban greenery, pedestrian flows and the construction concept based on the principles of energy efficiency. Careful approach first



of all confirms the existing values of the green fund through the concept of "green islands", enabling more or less functional pedestrian flow and link to the environment. Integrativeness of the zone is achieved through visual interconnection procedures (Ambient 1 and 2), functional pedestrian connection through subway (Ambient 2 and 3) and a functional pedestrian connection on the ground floor (Ambient 3, 4 and 5). In this way, the authors divide the zone into three segments (ambient: 1 and 2 and 3 + 4 + 5). In terms of the program, the authors describe the first segment of this chain as a street island with an

overhead garage in combination with tertiary activities- located towards "Petar Kočić" Park and with open green space towards Hotel "Bosna". Through remodeling process, the authors solve the space in front of the Museum of Contemporary Art (MSU) partly as a green environment and partly as an event square, partly at the expense of the existing greenery, while the space next to the Krajina Business Center is solved by an underground garage, above which they form an alley with a water motif. With the solution of ambient 3 and 4, the authors rely on the existing design and program framework that they functionally



Authors team:
Dragan Marcetic, arch.
and Milan Maksimovic, arch.
Igor Pisaric, arch.
Serbia

solve as a green open space with park elements, whose motif is repeated in ambient 5, thus integrating ambient 3, 4 and 5 into a single green functional unit. From the point of view of the program of planned buildings in Ambient 5, the solution relies on the concept of a residential-business block that is developed by a diverse program of tertiary and quaternary activities on the ground floor with an open central space of the block, and the cultural purpose towards Ambient 4. Applying the concept of a double façade with "vertical gardens", the authors apply the

procedure of repeating the same element, which results in non-integration with the established morphology and identity of the environment. Regarding the monumental heritage, it is generally foreseen to change the location of the Ban Milosavljevic monument in ambient 4. Given the location of the new monument of the Defense War 1992-1995, as located in ambient 4, the solution does not include a spatial-functional analysis, nor it proposes a spatial-compositional solution that would encompass this monument.



Author's code
2SL5321

**SECOND
PRIZE**

in the amount of
EUR 8.500,00

The concept is based on the intersection of two pedestrian routes – the existing and planned, and a new town square is defined here. The square occupies a large area in order to emphasize its monumentality and importance for Banja Luka as the capital of Republika Srpska. The square is divided by green areas and bordered by the park area. In this way, the competition solution preserves and enhances the natural values in

the city center. Built-in and green areas are largely integrated, and moving through the central zone gives the impression of a constant shift between the built and the natural.

With the proposed solution of the central pedestrian zone in Banja Luka, this work affirms the heterogeneity of the urban environment, primarily through the process of careful treatment of the parterre and the di-



verse composition of greenery and green surroundings. Integrativeness of the zone is achieved through visual interconnection procedures (Ambient 1 and 2), functional pedestrian connection through subway (Ambient 2 and 3) and a functional pedestrian connection on the ground floor (Ambient 3, 4 and 5). The authors refer to the first segment of this chain as a street island with an underground garage combined with tertiary activities and cultural contents within a canopy located opposite the facade of the Museum of

Contemporary Art (MSU). The space in front of the MSU has been solved with a park character and supplemented by a canopy on a new strip plateau that is formed towards the "Krajina" building, which is connected to the underground pedestrian passage towards Ambient 3. The solution envisages additional greenery in the Ambient 3 around the Temple and its integration with the space in front of the Hotel "Bosna" through materialization of an elliptical parterre. Ambient 4 has been resolved as a green



Authors team:
Mihailo
Mikavica and
MartaMinic
Serbia

square, while retaining and affirming the existing tall green fund through an accentuated composition of circular green gardens on the square. This ground floor concept was also applied in Ambient 5, with an emphasis on flows and breaks through integration with a diverse ground floor program and an emphasis on the opening of this block towards the perimeter environment. With regard to the monumental heritage, the decision without prior spatial verification, foresees a

change in the location of the Ban Milosavljevic monument in Ambient 4. Considering the location of the new Monument of the Defense War 1992-1995 located in Ambient 4, the solution ambitiously envisions a location between the Temple and the City Hall in the form and zone of the pedestrian ramp. Greenery composition has been carefully crafted in terms of habitus as well as texture, volume and color in order to achieve diverse ambiances and spatial accents.



Author's code
77111TW
**HONORABLE
MENTION**
in the amount of
EUR 1.800,00

The competition work has processed and offered solutions for all five environments that make up the considered scope. The project emphasizes the historical axis and continuity of the landscape, strengthens the design concept of an "urban oasis" through a multi-level vertical landscape, introduces a green belt into the old city area with the intention of making Banja Luka a "green city".

The proposed solution elaborates the concept of a "green city" by forming a series of "green roofs" be-

neath which, it places in Ambient 1, trade facilities and garage space, linking it with overhead passage across Vidovdanska Street to Ambient 2. It proposes a bus stop in front of the building and opposite the Museum of Contemporary Art (MSU) with the "green wall" in the back. In Ambient 2, a new square is formed with a historic monument, and underground garages are planned to be built below it with a driveway from Vidovdanska Street. Overhead passage with a pedestrian and bicycle path, as a "green roof", has a connection



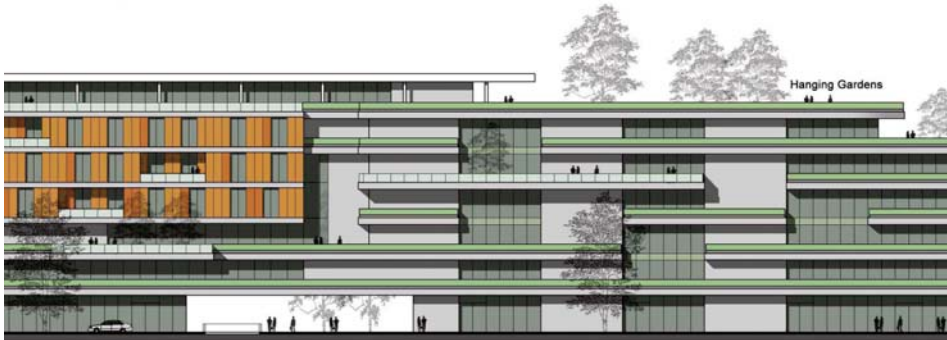
with Ambient 1, but also creates a problem of connecting the newly created level with the ground floor. The connection is achieved by ramps which, by their position and dimension, physically and visually impede a good connection of the objects that refer to the scope of the competition and of the ambiances in their relation with each other. Intervention in Ambient 3 comes down to the planning of a subway that connects to Ambient 2. The work connects Ambients 4 and 5 by forming a new pedestrian street with green park areas in the height of the corridor and a fountain in the central axis. Also, pedestrian paths in the form of ramps are planned in this Ambient, which are superimposed on the planned objects in Ambient 5, and which connect the angle of the ground floor with the first floor of the objects in question. In addition to the aforementioned, there is also a children's playground in this Am-



Residential Building



Commercial Building



Studio A05,
Architectural Design
and Research
Institute of HIT
Authors team:
 Tang Jiajun;
 Zhang Bo;
 Dong Tianqi,
 China.

bient, and grasslands, flower paths and tall plants are envisaged within the park. In this way, the solution again brings out the subject of ramps, especially in terms of their required lengths, and the inevitable formation of inaccessible and unusable spaces below them, especially in the area of the building of the Presidential Palace. Within Ambient 5, larger water space within the block with pedestrian bridges and platforms above the water is planned. The block in the main lines follows the given parameters regarding the heights and dimensions of the buildings. The concept of con-

necting the side streets to the central pedestrian zone within the block was achieved. Below the block is a garage. Walking routes are planned along residential and commercial buildings with the interpolation of green spaces parallel to the water surfaces. The characteristic of this work is the greening of the roof terraces. Concerning the monumental heritage, the solution without prior spatial verification keeps the Ban Milosavljevic monument within this unit and proposes a new position. In contrast, they provide a site for another historic monument.

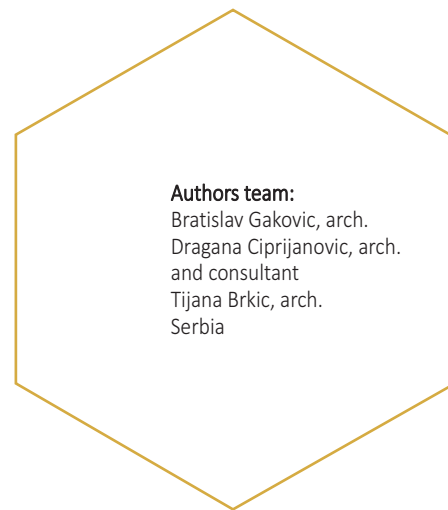


Author's code
12241BD
**HONORABLE
MENTION**

The competition work offered solutions for all five ambiences that make up the considered scope. The work proposed a central axis that connects all the ambiences, calling it the "Promenade of Remembrance."

The solution proposes a diagonal axle to connect all spatial units: from the intersection of Vasa Pelagic Str. and Dr Ban Todor Lazarevic Str. to the city niche just off the southern end of the Museum of Contemporary Art. The authors refer to this axis as the "Axis of Re-

membrance" and relate to it with the competition requested memorial contents and other elements of the city memories- and its (re) presentation. The authors believe that the central area of Banja Luka lacks a variety of elevation positions for the activation and enjoyment of the public urban space, and they propose solutions for this by lowering below the level of the basic elevation of the terrain, and raising the public domain into the parts of the first floor above ground, and



- as the most striking part of this work- going out to the (green) city roofs in an oblique plane and in continuity with the city parks (in Ambient 1). Although this solution brings a very high level of completion of the tender material, a solid visual and graphic standard, attention to detail (accompanied by quality examples), it still neglects the elements of the existing state (as well as the valid documents of spatial regulation), and consequently reduces its own values and, most importantly, its applicability in a given location. Hence, al-

ready active construction works are ignored in Ambient 5, while at the same time, the construction zone moves to Ambient 4 intended for public urban space. The solution for Ambient 1, as well as the concept of facades in Ambient 5, can be considered bold, successful and even applicable, while the leveling in Ambient 2, 3 and 4 goes to the other extreme. The tendency of the work towards integrating the overall unit of the competition task is for honorable mention.



Author's code
21218BC

**HONORABLE
MENTION**

The concept evolved through the lattice overlap motif. Each grid was created by geometry of the existing physical structure. Each ambient geometry has its own sub-theme and sub-argument. The lighting installation belongs to one network, while the water park / fountain belongs to the other and the main line and so on. The interplay of these networks creates a recognizable overarching theme in all ambiances, and throughout the city's central public area it creates a visual experience.

This proposal addresses the city center in a partially ac-

centuated way, where facilities and spaces become a redefinition traverse. Namely, they are subject to organization and design, where the usual relationships among the elements change, creating new forms that express other codes and metaphors. Different typologies are suggested in comparison with the usual ones, related to the contents specified by the competition program. In this way, the residential-business complex in Ambient 5 becomes, by covering the common interspace, "something else" in relation to the usual architectural expression of the intended purpose. The

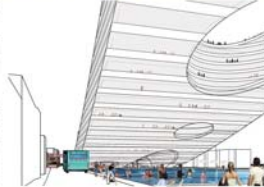
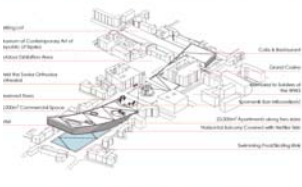


described covering emphasizes the space between the objects and underlines the public use. The core of the "events" becomes the interspace, towards which gravitate the surrounding ambiances precisely because of the power of the spatial expression of the covered surface. The green, park areas in Ambient 2 and Ambient 4 are resolved more at the image level than the concrete assembly in the space. The solutions proposed are, as already noted, more abstract representations of an area than concrete spaces. Additionally, their spatial organization confirms this, since it is more formally than functionally placed in a specific place. The statements made also apply to Ambient 1, where the assumed green spaces are more decorative points than usable park facilities. The proposed solution therefore relies more on the expression than on the concrete organization of space; preference is given to meaning,

suggestiveness and architectural attitude and expression. This is precisely the quality of this work; the spaces shown are visualized concepts, closer to the substance of the concepts to which they refer, than to what they are concretely. The only aspect of the work articulated as the materialization of the idea is the illumination of the treated ambiances; the system of street lighting, different shapes, technologies and positions in the competition coverage, communicated the idea of light as a building element of an organized space. It emphasized, even formed, pedestrian paths, areas of gathering, accentuated points of importance and located focuses of understanding the essential points in the treated area. The authors, therefore, put light at the heart of their idea, thus resolving the anatomy of space, while positioning themselves at the edge of a pure concept, they expressed their views on the "play" of ordinary elements, which, brought into (un) ordinary relations, create new meanings.

Authors team:

Aleksandar Kostic,
Rose O' Hare,
Woytek Cymerys,
Ireland



URBAN SEESAW THE CONCEPTUAL DESIGN FOR THE CENTRAL PEDESTRIAN ZONE IN BANJA LUKA 2019

The proposed concept is a multi-level pedestrian zone in the city center, with the main goal of creating a public space that is accessible to all citizens and provides a high-quality environment for walking and social interaction. The design is based on the existing urban fabric and aims to create a new public space that is integrated with the surrounding buildings and streets. The design is based on the existing urban fabric and aims to create a new public space that is integrated with the surrounding buildings and streets. The design is based on the existing urban fabric and aims to create a new public space that is integrated with the surrounding buildings and streets.

The design is based on the existing urban fabric and aims to create a new public space that is integrated with the surrounding buildings and streets. The design is based on the existing urban fabric and aims to create a new public space that is integrated with the surrounding buildings and streets. The design is based on the existing urban fabric and aims to create a new public space that is integrated with the surrounding buildings and streets.



Authors code SA22022

Authors team: Mr. Wenyi Zhu, Mr. Yang Yue, Miss. Lin Zhang - School of Architecture, Tsinghua University Beijing, P.R.China



SITE PLAN

The urban project in its general scheme has considered as its own cultural orientation what is contained in the UNESCO Declaration of Paris in 2001 "cultural diversity as a source of exchange, innovation and creativity is as necessary for humanity as biodiversity for nature". In the Ambient 8 the project proposes architectural and technological solutions that take into account the local architecture, local habits and the characteristics of the geographical and socio-cultural context of the region.

Some local buildings have been classified and considered as an important model solution, suggesting technological choices, materials, roof section and aggregation factors.

The relationship with water plays an important role in the customs of Borgo Libre and its presence together with the creation of a system of spaces for culture, play and leisure, workshops, in association with shops, cafes and restaurants, should provide a multifaceted scene for the life of the city and a key factor in the landscape. It is precisely within this context that the project develops in a continuum of spaces and scenarios.



A BIRD'S EYE VIEW



VIEW FROM THE SQUARE NEAR V FELAGICA STR. IN DIRECTION OF THE CHURCH



VIEW FROM THE HOTEL_BOSNA74 DIRECTION



VIEW FROM THE CHURCH SQUARE IN DIRECTION OF THE V FELAGICA STR.



VIEW FROM THE TEMPLE IN DIRECTION OF THE GALLERY



CROSS SECTION/VIEW FROM SAN DR. T. LAZAREVIC STREET

M+ 1.500



M+ 1.500

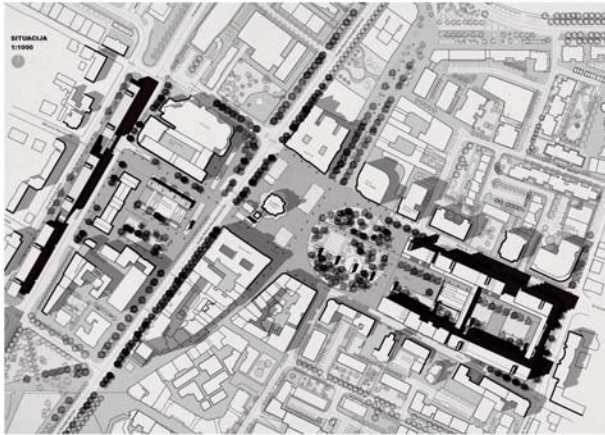
Authors code 91871FU

Authors team: Arch. Michela Del Nero, Arch. Pierpaolo Frediani, Arch. Roberta Menconi, Arch. and Landscape Architect Simona Paladini, Arch. Nicola Giovanni Arrigo Venutelli, Graduated in Science of Architecture Valentina Volpi i Architecture student Alberto Fazzi, Italy



...и ...





Prostori intermedijacije - Nove prirodnosti

Prostorni rešenja su projektovana da podrže i aktivni i pasivni načini života i imaju za cilj da oblikuju i stvore kvalitetne i funkcionalne prostore koji će biti otvoreni i uključujući. U isto vreme, prostori su stvoreni tako da omogućuju različite vrste aktivnosti i pružaju različite nivoe privatnosti i različitih nivoa otvorenosti prema javnim prostorima. Prostori su projektovani tako da omogućuju različite nivoe privatnosti i otvorenosti prema javnim prostorima. Prostori su projektovani tako da omogućuju različite nivoe privatnosti i otvorenosti prema javnim prostorima. Prostori su projektovani tako da omogućuju različite nivoe privatnosti i otvorenosti prema javnim prostorima.

Prostorni rešenja su projektovana da podrže i aktivni i pasivni načini života i imaju za cilj da oblikuju i stvore kvalitetne i funkcionalne prostore koji će biti otvoreni i uključujući. U isto vreme, prostori su stvoreni tako da omogućuju različite vrste aktivnosti i pružaju različite nivoe privatnosti i različitih nivoa otvorenosti prema javnim prostorima. Prostori su projektovani tako da omogućuju različite nivoe privatnosti i otvorenosti prema javnim prostorima. Prostori su projektovani tako da omogućuju različite nivoe privatnosti i otvorenosti prema javnim prostorima.



Pogled na fasadu Bena prema ul. M. Trsta



Pogled na prostora crkve prema ul. V. Pelagija

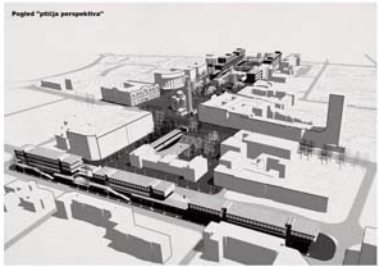


Pogled na pravca Hrama ka Gataji

77707AA



Pogled na aperturu kod V. Pelagija ka krtini

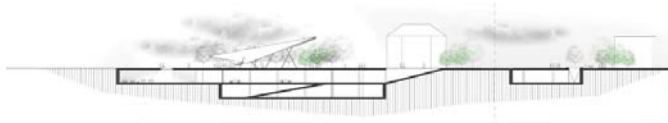


Pogled "urbna perspektiva"



Authors team: Verica Krstic, arch, Jelena Ristic Trajkovic, arch, Aleksandra Milovanovic, arch, Marko Dedic, arch. and Katarina Dimitrijevic, arch. Serbia

Authors code 77707AA



Проектна документација садржи и амбјенат, те
највише познатице и прелепости,
самоукивајући се у својој историји, који
имају своје посебноће и индивидуалност,
проблематику, вредности и своје просторне
карактере. Све је то у складу са идејом
одрживости на савременој пројекцији и
највише познатице, прелепости, амбјенат,
те и својој историји.



Nova ulaga u razvoj građevine projekta - 200 mil. eura - i dalje "topiri" jednako tako kao i prethodni projekat. Uprkos tome, ova ulaganja su značajna za razvoj lokalne zajednice, jer omogućuju stvaranje novih radnih mjesta, poboljšanje uslova života i obrazovanja stanovništva. Osim toga, ulaganje omogućuje i unapređenje infrastrukture i povećanje sigurnosti stanovništva. Uprkos tome, ova ulaganja su značajna za razvoj lokalne zajednice, jer omogućuju stvaranje novih radnih mjesta, poboljšanje uslova života i obrazovanja stanovništva. Osim toga, ulaganje omogućuje i unapređenje infrastrukture i povećanje sigurnosti stanovništva.



PODUŽNI IZGLED 1 _ 1:500



Authors code 23613AA

"Arco project", d.o.o. Belgrade

Authors team: PhD Petar Arsic, arch, Danilo Arsic, arch, Ana Virijevec, arch, Nikola Popovic, stud. arch, PhD Mirjana Sekulic, arch. and PhD Ljiljana Dosenovic, arch. Serbia

The background is a solid teal color with several thin, dark teal lines forming a geometric pattern. A large, light teal hexagon is centered on the left side of the page. Inside this hexagon, the text is displayed in a white, sans-serif font.

Banja Luka,
23. december 2019.
- 13. januar 2020.
Banski dvor